

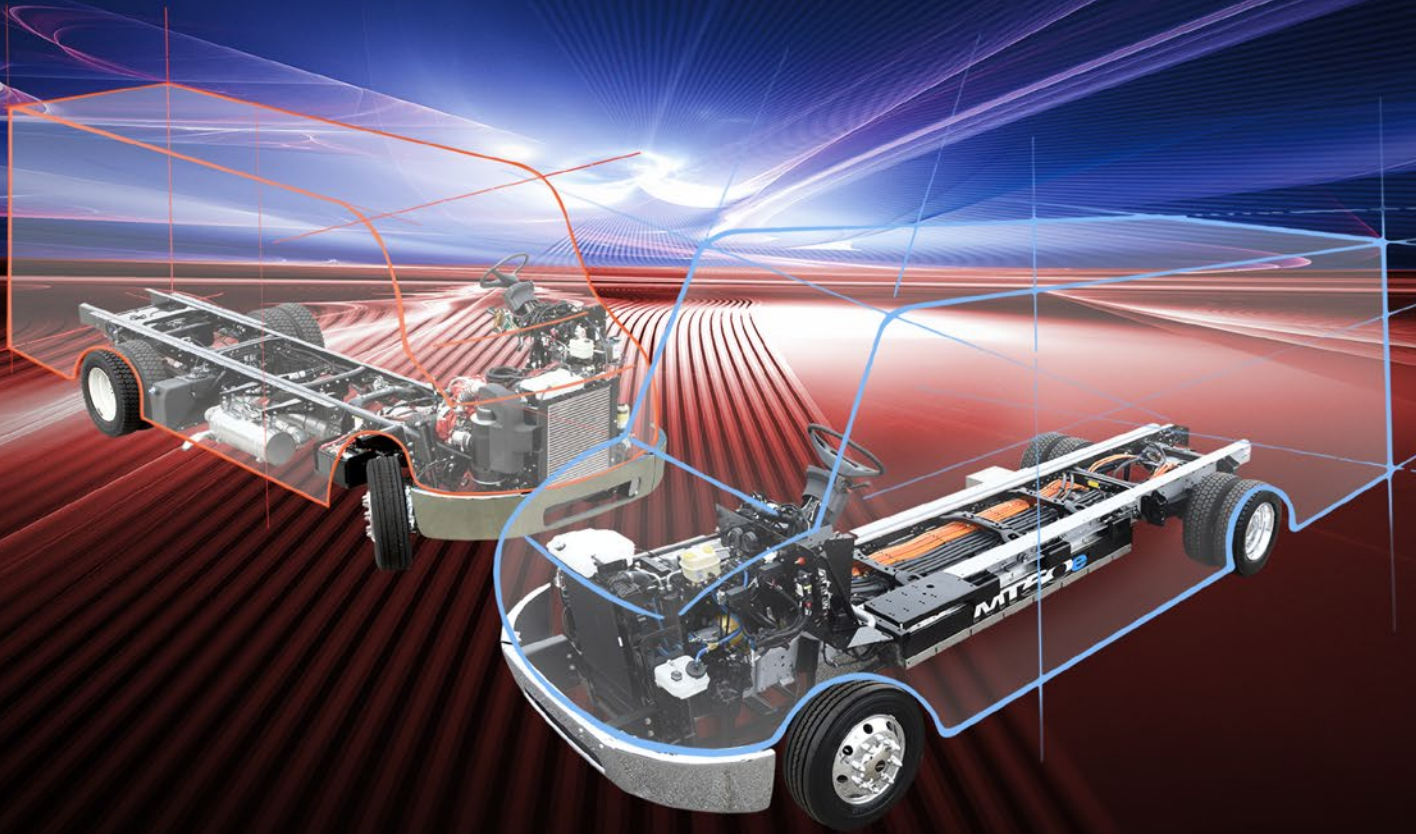
MT

C H A S S I S



ADVANTAGE

WALK-IN VANS



DIESEL



GASOLINE

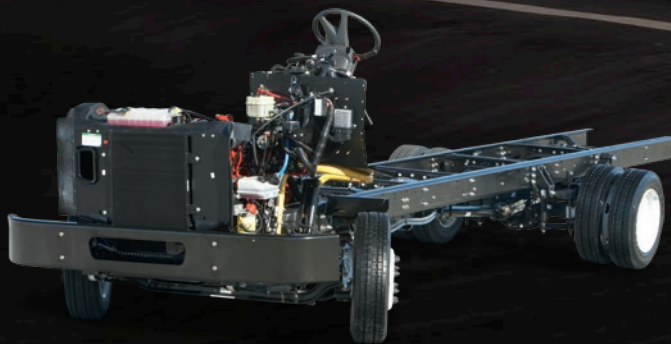


ELECTRIC



PRO STRENGTH.

Freightliner Custom Chassis walk-in vans are built to deliver greater profits through increased productivity and proven fuel economy. Our commercial MT chassis combines heavy-duty components designed for maximum uptime with automotive-like usability for unbeatable driver safety and comfort. FCCC chassis also provide the ultimate flexibility for box configurations and your choice of electric, gasoline, or diesel fuels. Most importantly, with the industry's largest nationwide service network and 24/7 factory support, you can count on maximum uptime. FCCC commercial delivery vans — Born to work. Driven by you.





DAIMLER

DAIMLER TRUCK
North America



GROWN IN GAFFNEY

Freightliner Custom Chassis leverages the world-class engineering and resources of Daimler Truck North America — from the long-haul know-how of Freightliner Trucks to the premium build and durability of Western Star — and supports them with American manufacturing muscle. From our home in Gaffney, South Carolina, we deliver the latest chassis innovations in safety, ride, handling and comfort.



MT CHASSIS, DIESEL



BORN TO WORK.

WHY A WALK-IN VAN?

Walk-in vans built on a durable FCCC chassis offer many advantages over other truck options. It all comes down to productivity and profitability.



FUEL EFFICIENCY

When every gallon matters, choose the right choice of power combined with an unsurpassed Allison® transmission.



LARGE CARGO VOLUME AND HIGHER GVW

The commercial-grade MT chassis gives you the freedom to kick up your cargo load and efficiently handle higher weights.



HIGH EFFICIENCY STOPS, 30 TO 300 PER DAY

Better components from drivetrain to brakes mean rugged reliability on the job. A stand-up cab with cargo access, curbside exit, and low-step entrance saves valuable time in high frequency stops.



DRIVER COMFORT, SAFETY AND RETENTION

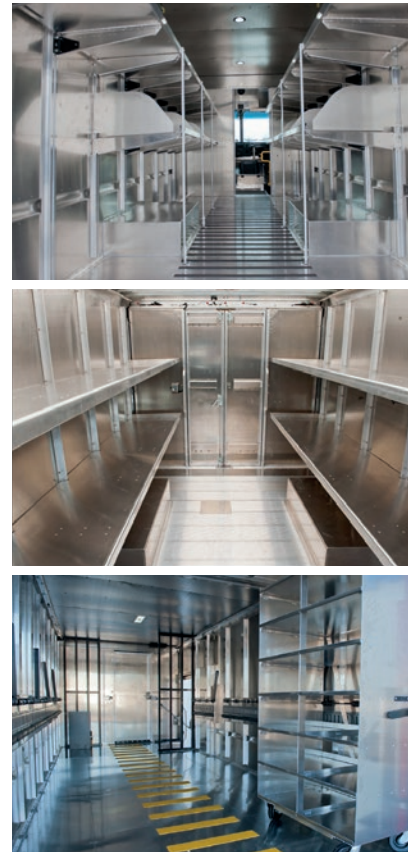
A commercial walk-in van provides the very best driving and delivery experience, period. From ride and handling to easy curbside entry, this is a driver's top choice.



DO MORE WITH A CUSTOM CHASSIS.

FCCC is dedicated to providing specialized chassis that are customized for the unique demands of your business or industry. It's the only way you can be sure you're getting the best in performance and efficiency.

- **Unlimited configurations for maximum versatility** – Whether you need an interior with shelving and storage units, on-the-job work space, retail displays or more, the MT chassis is built to accommodate.
- **Pick your power** – Our diesel, gasoline, and electric powertrains are all factory installed and range from 200 hp to 380 hp. Whatever you choose, the MT chassis accommodates virtually any box configuration, meeting the needs of a wide range of applications.



BUILT FOR YOU.

APPLICATIONS

- ✓ CONSTRUCTION
- ✓ BAKING & SNACK
- ✓ DELIVERY
- ✓ PARCEL & HOME DELIVERY
- ✓ LINEN & UNIFORM
- ✓ UTILITY COMPANIES
- ✓ MUNICIPALITIES
- ✓ SMALL TOOLS SALES
- ✓ DRY CLEANERS
- ✓ GUTTER REPAIR & REPLACEMENT
- ✓ VENDING/FOOD SERVICE
- ✓ FLORISTS
- ✓ CARPET INSTALLATION
- ✓ LAUNDRY SERVICES
- ✓ ICE CREAM
- ✓ BLOOD BANKS
- ✓ AIRLINES
- ✓ SALVAGE
- ✓ LOCKSMITHS
- ✓ SOFT WATER & WATER CONDITIONING
- ✓ NURSERIES & LANDSCAPING
- ✓ SMALL APPLIANCE REPAIR
- ✓ CATERING
- ✓ SEWER CLEANING
- ✓ ELECTRICAL CONTRACTORS
- ✓ NEWSPAPER DELIVERY
- ✓ AUDIO/VIDEO PRODUCTION
- ✓ PET CARE
- ✓ RUG SERVICES
- ✓ SWIMMING POOL SUPPLY
- ✓ LIBRARIES & BOOKMOBILES
- ✓ CARPENTERS
- ✓ PLUMBING
- ✓ TV NEWS
- ✓ POLICE & FIRE DEPARTMENTS
- ✓ PARTS TRUCKS
- ✓ HVAC
- ✓ EXTERMINATORS

HANDS ON. HEADS UP. SAFETY FIRST.



Driver safety, comfort and retention are top considerations for your business. Many advantages make an FCCC walk-in van the right choice to address these critical concerns.

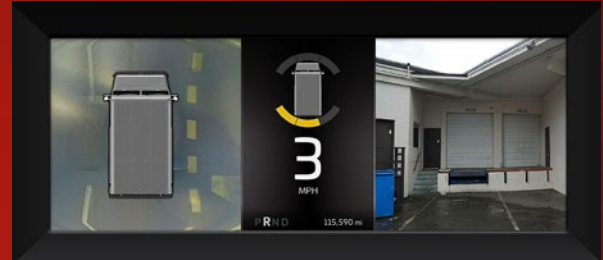
- Curbside entry means no exiting in traffic
- Low entry step eliminates the time and injury risk of climbing in and out of a box truck
- Optional 360-degree camera system improves visibility
- Up to 53-degree wheel cut provides the tightest turning radius in the industry, helping drivers avoid incident



ROADWATCH ACTIVE SAFETY SYSTEMS

360° CAMERA SYSTEM WITH MICROPHONE

Four cameras — left, right, rear and forward — and four proximity sensors work together to create a 360° view of obstacles around the vehicle. The rear microphone engages when the vehicle is shifted to reverse.

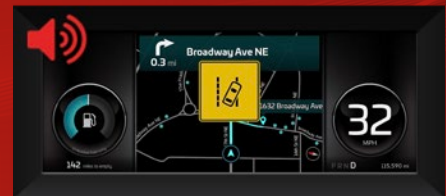


OVERHEAD OBJECT DETECTION SYSTEM

Provides visual and audible alerts when overhead clearance may be compromised.

ELECTRONIC STABILITY CONTROL (ESC)

Provides active braking to bring the vehicle under control in events such as sudden lane changes and adverse weather conditions.



LANE KEEPING WITH HAPTIC FEEDBACK

Automatically brings the vehicle back within lane markings and vibrates the steering wheel to alert the driver.



COLLISION MITIGATION SYSTEM WITH ACTIVE BRAKING

Monitors the road ahead for objects, warns drivers of possible rear-end collisions, and applies the brakes when needed to help mitigate a collision.



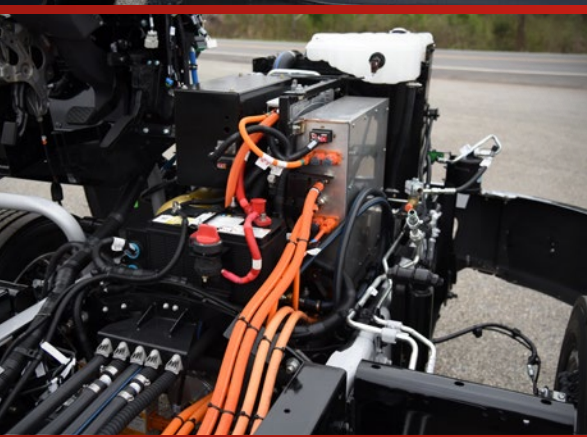
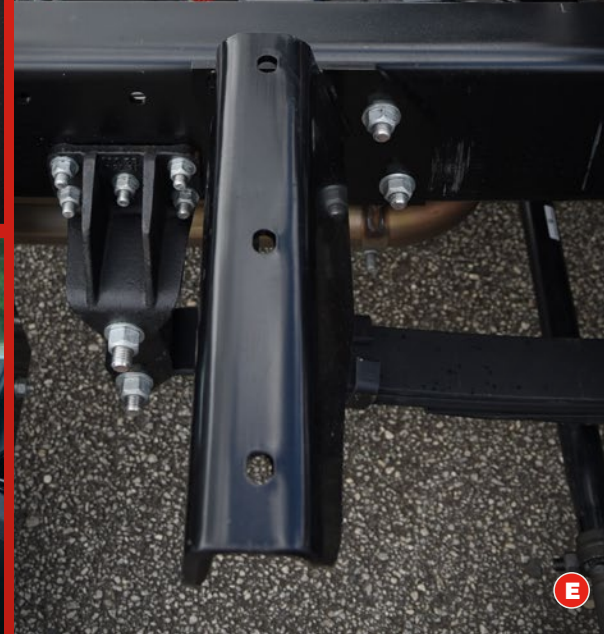
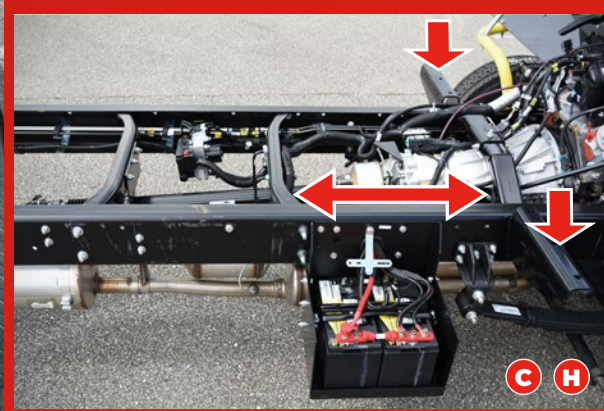
DRIVETECH

Display & Control System



DriveTech prioritizes driver safety by putting every command within reach. An ergonomic steering wheel and column-mounted controls are paired with the OptiView LCD display to create an automotive-style driving experience and help drivers keep their hands on the wheel and their eyes on the road.

Right hand gear select on MT50e only.



HIGH STRENGTH FRAME RAILS

- A** One piece continuous straight frame rail — high strength construction eliminates frame failures for life of vehicle
- B** Frame holes punched per customer specifications — increases frame durability
- C** First crossmember 25" from spring shackle — increases strength at high stress areas
- D** Zinc-coated Grade 8 bolts with hardened fasteners — reduces frame hardware maintenance and replacement costs

COMMERCIAL-GRADE DRIVETRAIN

- E** Allison Commercial Truck Transmission — the most durable and reliable commercial truck transmissions on the market
- Dana eS9000r eAxle — instant torque that outperforms diesel options (*MT50e*)

SIMPLIFIED SERVICE & INCREASED COMPONENT LIFE

- F** Filter / Air Cleaner — larger filter increases dirt holding capacity; also provides easy access to filter for service
- 4-piston hydraulic disc brakes increase brake pad life*
- Spicer® SPL Series driveshaft with grease zerk fittings (*optional SPL XL Lube for Life*) increases reliability and reduces maintenance

COMMERCIAL DURABILITY.

If you've got a job to do, you need a real work truck. Our commercial chassis feature heavy-duty, pro-grade components that are designed to far surpass automotive-class vans for maximum uptime and unbeatable driver safety. And while commercial grade may come with a higher price tag, in the end, it costs less thanks to more uptime, longer life, and reduced maintenance.

The MT chassis features a durable full-section steel straight-rail frame that is the strongest in the industry. It is designed to reduce flex and bowing to minimize chassis stress, with GVWRs ranging from 14,990–30,000 lbs.

SMART ENGINEERING

- G** Standard air water separator and housing drain for evacuation of water intrusion — offers greater engine protection from water intrusion; indirect air induction reduces front air contaminants from entering filter/engine (*diesel engines*)
- H** Outriggers designed with body builders — no additional frame modifications required by body company

EASY TO DRIVE

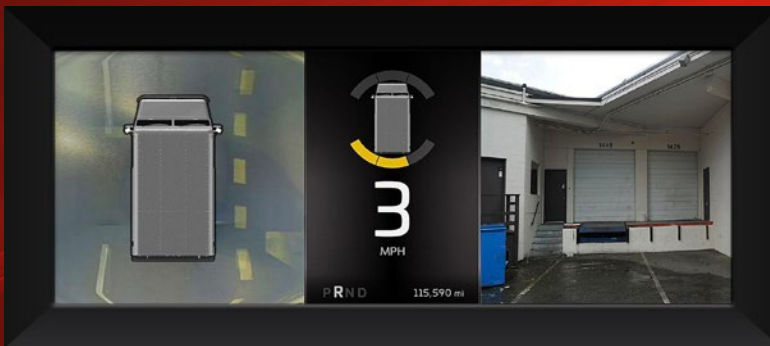
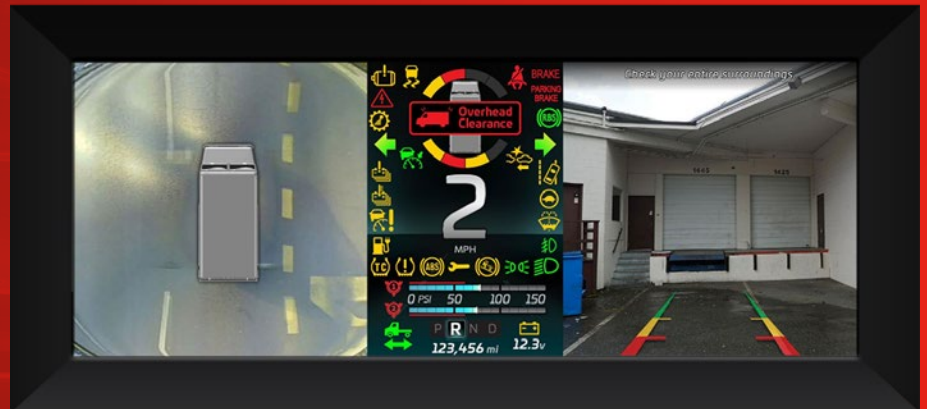
- I** Steering columns feature premium design and 53-degree wheel cut, offering superb maneuverability and handling
- Flat-leaf suspensions with front sway bar provide a solid, smooth ride; Taper-leaf available
- Premium 19.5" and 22.5" tires offer an extra-wide and extra-deep tread to deliver superior handling and durability, as well as scrub resistance

*Optional Feature

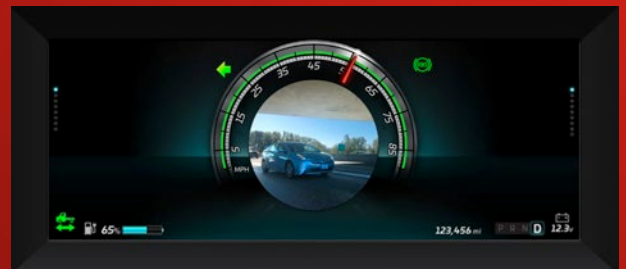
PREMIUM DRIVING EXPERIENCE.

OPTIVIEW®

Designed in collaboration with Mercedes-Benz®, OptiView features a fully integrated, all-digital, anti-glare display with adjustable brightness and an easy-to-read interface with clear fonts, colors, and menu structure.



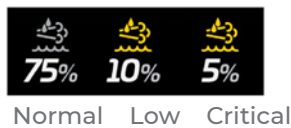
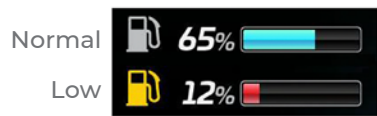
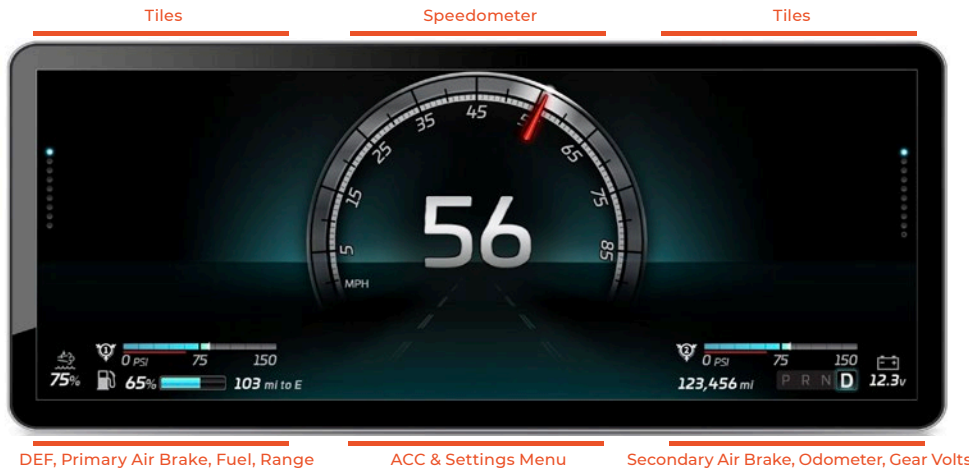
360° Camera System with Proximity Sensors



Integrated turn signal camera

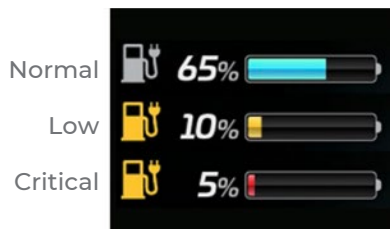
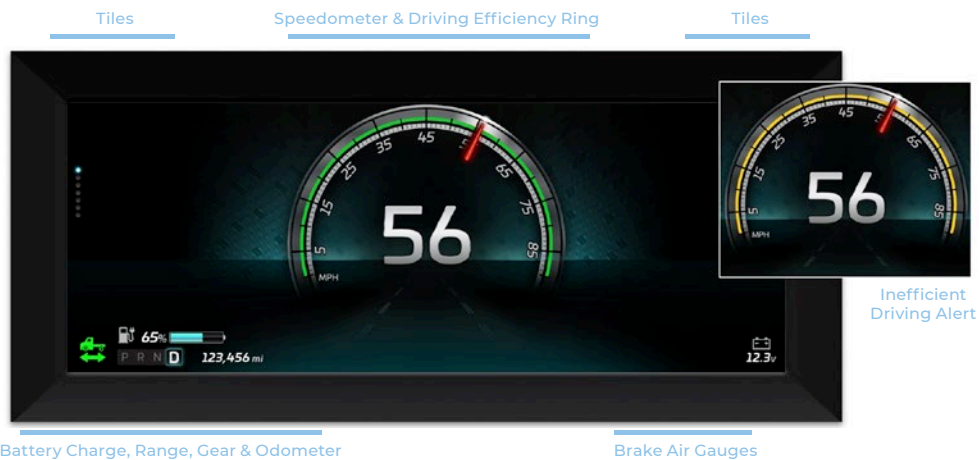
Four cameras — left, right, rear and forward — and four proximity sensors work together to create a 360° view of obstacles around the vehicle. In Drive or Reverse and moving at speeds up to 10mph, OptiView shows a 360° camera view on the left, a rear camera view on the right, and a proximity alert in the center. A high proximity alert triggers an audible alert.

For DIESEL & GASOLINE



- TILE SELECTIONS INCLUDE:**
- Tachometer
 - Fuel economy
 - Transmission temp
 - TPMS
 - Oil & coolant
 - Trip 1
 - Fuel & DEF
 - Trip 2

For MT50e



- TILE SELECTIONS INCLUDE:**
- Driving efficiency & energy usage
 - Trip 1
 - Energy
 - Trip 2
 - Tire pressure
 - Settings

PICK YOUR POWER.

Electric, gasoline, diesel — no matter what fuel drives you, FCCC is committed to delivering a medium-duty chassis with unrivaled performance and automotive-like usability.

We have a proven reputation for crafting efficient, durable, commercial-grade chassis built for safety and longevity. When you want to pick your power, there is only one choice: Freightliner Custom Chassis.



GASOLINE

- Power/Torque: 380 HP, 465 lb/ft
- Up to 6% more efficient than the competition
- Entire powertrain sold, warranted, and supported by FCCC



DIESEL

- Power/Torque: Up to 300 HP, 660 lb/ft
- Better fuel economy, HP and torque than competitor automotive gasoline engine
- Longest scheduled maintenance intervals in its class



ELECTRIC

- Power/Torque: Up to 226 kW (303 HP)
- Zero-emissions, all-electric
- Full charge in 3 hours with DC Fast Charging



WE'VE GOT

CHASSIS

GVWR: 14,990–23,000 lbs



GASOLINE

ENGINE



FCCC GM 6.6L Gasoline

Cost-effective alternative for customers who operate at GVWs of 23K or lower

- 380HP, 465 lb/ft torque
- Designed for durability with cast-iron cylinder block and hydraulic roller valve lifters
- Broad horsepower band with a strong low-RPM torque
- Injects fuel only where it is needed, directly into the combustion chamber, promoting precise fuel control, combustion and efficiency
- Improved fuel atomization at cold temperatures enhances ability to start at cold temperatures
- Intake port design enhances fuel/air mixture motion, particularly at lower RPMs
- Inconel alloy exhaust valves help dissipate heat to aid in valvetrain reliability
- The heads' valve seats feature unique inserts designed to withstand high heat and extreme conditions under load
- Also features Variable Valve Timing (VVT), dual-pressure control and variable displacement oil pump, and oil-jet piston cooling

THE POWER.

CHASSIS

GVWR: 14,990–30,000 lbs



ENGINE

DIESEL



Cummins B6.7L Diesel

Durable engine for customers who tend to operate near the vehicle's GVWs or own vehicles with higher GVWs

- 200–300 HP, 520–660 lb/ft torque
- Oil Change Interval: 18 Months/30,000 Miles
- Cummins Connected Solutions® with Acumen® — provides maintenance notifications, engine fault information, available engine software updates and more; turns this data into usable information that can be sent back to the vehicle owner to improve vehicle maintenance and operation; free throughout the engine warranty period, no subscription fee
- Warranty: 3 Years/Unlimited Mileage; towing coverage for warrantable failures; extended warranty available





positiv⁺⁺⁺energy

ELECTRIC

MT50e

The all-electric MT50e commercial-grade walk-in van chassis merges Freightliner Custom Chassis' legendary performance with Proterra's advanced EV technology to meet the demands of last-mile delivery by generating incredible power and range – with zero emissions.

Range

150–170 Miles

Performance

70 mph @ 19,000 lb. GVWR

Simplicity

50–60% less maintenance

Confidence

8-year/150k-mile
battery warranty

Comfort

Less noise, heat and vibration

Earth-friendly

Zero emission



[Learn more at electricwalkinvan.com](http://electricwalkinvan.com)

positive⁺⁺ownership

A low-maintenance design backed by the industry's best warranty coverage and a national support network make the MT50e the perfect answer for a practical, all-electric alternative to traditionally-powered delivery fleet vehicles.

Support

- FCCC 24/7 Support
- 700+ Location Freightliner service network
- Detroit eFill charging network

Savings

- Up to 60% less powertrain service
- Up to 50% cheaper than diesel

positive⁺⁺operation



The MT50e's medium-duty battery system relies on the same innovation and technology that enabled Proterra's heavy-duty battery system to deliver more than 20 million miles of service to electric mass transit fleets. This safe, powerful and compact system is designed to deliver maximum range in the harshest environments.

Exclusive Proterra Battery System

- 226 kWh = 303 HP
- Up to 170 mile range
- Full charge in 3 hours
- 70 mph @ 19,000 lb. GVWR
- 8-year/150k mile battery warranty
- Easily accessible components
- Liquid cooling package
- Minimal additional technical training

positive⁺⁺impact

The MT50e is designed to be kind – to the drivers that spend many hours behind the wheel, the communities they serve and the planet we all share. It's 50-state EPA and CARB certified and complies with all governmental guidelines.

Eco-Friendly

- Zero emissions
- Decreased noise pollution
- Improved air quality
- Reduces greenhouse gas emissions

Reduced Driver Fatigue

- Low heat
- Low noise
- Low vibration
- High ceiling, low entry

REAL COST OF OWNERSHIP™

Beyond the traditional metrics of fuel efficiency, maintenance and service life is Real Cost of Ownership, RCO. Before fleet decisions are made, ensure you've accounted for all the outlying factors of ownership cost. Your fleet depends on it.



FUEL EFFICIENCY

No matter which power you choose, you can count on the MT to lead the way in fuel efficiency that translates into enhanced profitability.



SAFETY

From heavy-duty braking to maneuverability, ergonomics and curbside access—driver safety is our top priority.



QUALITY

As part of Daimler Truck North America, FCCC chassis are developed with legendary resources for design, engineering and manufacturing processes.



UPTIME

With 24/7 factory support and the largest nationwide service network, issues are quickly resolved to keep you on the road.

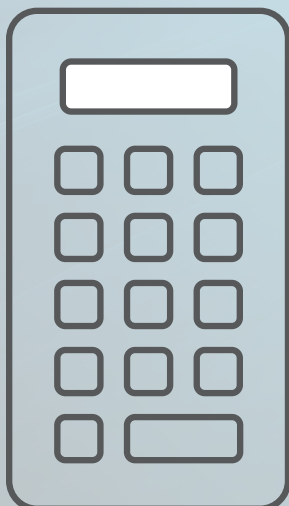


FUEL OPTIONS

Choose from electric, diesel or gasoline to best meet the needs of your delivery fleet.



ELECTRIC FLEET CALCULATOR



State
County
of Vehicles
Annual Mileage
Planned years of ownership

CUSTOMER PRICING TO COMPARE
INCENTIVE AMOUNT IF APPLICABLE
Fuel (Diesel = \$/gallon; EV = \$/kWh)
Fuel Economy
Maintenance and Repair

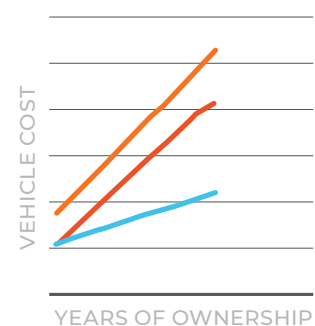
Total Cost of Ownership (TCO)

The return on an all-electric vehicle is often the first question for fleet owners. When you consider all the attributes of the MT50e, the backing of Freightliner, and the opportunities for subsidies, the calculation is simple and clear. **Contact your FCCC representative for access to our electric fleet calculator to gain insight on your potential returns with MT50e.**

Total Cost of Ownership by Fuel Type without Incentives



Total Cost of Ownership by Fuel Type with Incentives



For more information, visit electricwalkinvan.com.



20,000 MILES/YEAR

REAL COST OF OWNERSHIP COMPARISON

In a head-to-head comparison with conservative parameters and third party validation, FCCC's commercial chassis results in substantial savings.



AUTOMOTIVE STRIPPED CHASSIS

GASOLINE CHASSIS

GASOLINE CHASSIS

+\$5,000*

COMMERCIAL GRADE CUSTOM CHASSIS

N/A

+\$5,000*

6.6L DRIVETECH W/ OPTIVIEW (BASE)

N/A

STANDARD

ELECTRONIC STABILITY CONTROL

+\$1,200
(OPTION)

+\$1,000

WALTHER BRAKES

+\$600

BRAKE MAINTENANCE †

+\$4,400

0

TRANSMISSION MAINTENANCE DELTA ‡

+\$6,400

ALLISON COMMERCIAL TRUCK TRANSMISSION

AUTOMOTIVE GRADE TRANSMISSION

0

FUEL COST DELTA §

+\$3,600
(W/O ALLISON FUEL SENSE)

\$11,600

\$15,600

\$4,000

TOTAL 8 YEAR SAVINGS

(FCCC MTG)

\$6,000 TOTAL 9 YEAR SAVINGS
(FCCC MTG)

\$7,500 TOTAL 10 YEAR SAVINGS
(FCCC MTG)

*Estimated pricing based on national average; Walther brake option estimated at \$1,000; pricing subject to change.

†Brake pad change intervals 5 (competitor) to 1 (FCCC). Maintenance estimated on average dealer part and labor costs, including recommended maintenance schedule from manufacturer.

‡Allison report: 1¢ per mile (Allison) vs 5¢ per mile (competitor)

§Fuel efficiency validation by third party.



SPECIFICATIONS	
Engine	GM 6.6L Gasoline – 380HP at 4500RPM
Torque	465 lbs/ft torque @ 4,000 rpm
Transmission	Allison 1005/2005 automatic
GVWR	
Front	5,790–8,000 lbs
Rear	9,200–15,000 lbs
Total	14,990–23,000 lbs
GCWR Total	N/A
Wheel Base	158", 178", 190", 208" and 218"
Axles	
Front	Detroit DA-8.0-2, 8,000 lbs front axle Optional: Meritor MFS-08, 8,000 lbs front axle
Rear	DA-RS-13.0-2 13,000# (MT45G); DA-RS-13.5-2 13,500# (MT55G) Optional: DA-RS-15.0-2 15,000# (MT55G)
Tag	N/A
Brakes	
Front	4-wheel 2.6" dual-piston hydraulic disc pin-slide brakes with ABS; Optional WEMC 4-piston disc brakes
Rear	4-wheel 2.6" dual-piston hydraulic disc pin-slide brakes with ABS; Optional WEMC 4-piston disc brakes
Cooling System	690 sq. in. downflow, front-mounted radiator viscous fan drive with radiator-mounted surge tank
Electrical System	Alternator: GM 12V 170 or 220 AMP Alternator Starting: GM 12 AC Starter Battery: (1) Alliance 12 volt 700 CCA @ 0-degrees F (-18-degrees C); maintenance free Engine-mounted oil check and fill Power core flat panel air cleaner
Frame	
Rail	MT45G: 1/4" X 3" X 8" STEEL FRAME; 50KSI, 7.3 cu. in. Section Modulus MT55G: 5/16"X2.81"X9-1/8" STEEL FRAME; 80KSI, 10.28 cu. in. Section Modulus
Fuel Tank	40-gallon rectangular steel tank mounted between the rails; left-hand fill
Shocks	Sachs Shock Absorbers
Suspension	
Front	Leaf spring, 5,790–8,000 lbs. options available
Front Wheel Cut	53 degree
Rear	Leaf spring, 9,200–15,000 lbs. options available
Tires/Wheels	19.5" and 22.5"
Controls	Operator station; single electric horn; ZF steering column; four-spoke 18" charcoal steering wheel



SPECIFICATIONS	
Engine	200–300HP Cummins B6.7L 6-cylinder diesel
Torque	520–660 lbs/ft torque @ 1,600 rpm
Transmission	Allison 1000 and 2000 Series with RDS/EVS options
GVWR	
Front	5,790–10,000 lbs
Rear	9,200–20,000 lbs
Total	14,990–30,000 lbs
GCWR Total	N/A
Wheel Base	158" Optional: 138", 178", 190", 208"
Axles	
Front	8,000–10,000 lbs. options
Rear	13,000–20,000 lbs. options
Tag	N/A
Brakes	
Front	4-wheel 2.6" dual-piston hydraulic disc brakes with ABS, Optional WEMC 4-Piston Hydraulic disc brakes; Optional Air Brakes with MT55 Diesel
Rear	4-wheel 2.6" dual-piston hydraulic disc brakes with ABS, Optional WEMC 4-Piston Hydraulic disc brakes; Optional Air Brakes with MT55 Diesel
Cooling System	690 sq. in. downflow, front-mounted radiator; premixed 50/50 ethylene glycol antifreeze to -35°F; ADC electric on/off fan clutch
Electrical System	Alternator: Delco Remy 160-amp, 28SI Optional: Delco Remy 200-amp, Leece Neville 200-amp and 270 -amp Starting: Nippon-Denso 12V Starter With Copper Contacts Battery: (2) 1300 CCA @ 0-degrees F (-18-degrees C); maintenance free Forward-mounted oil check Frontal air intake with Farr ECO BC air cleaner with water separator
Frame	
Rail	MT45: 1/4" X 3" X 8" STEEL FRAME; 50KSI, 7.3 cu. in. Section Modulus MT55: 5/16"X2.81"X9-1/8" STEEL FRAME; 80KSI, 10.28 cu. in. Section Modulus
Fuel Tank	40-gal. rectangular, aluminized steel fuel tank mounted between the frame rails; left-hand or right-hand fuel fill; Optional: 45-gal and 60 gal
Shocks	Sachs Shock Absorbers
Suspension	
Front	Leaf spring, 5,790–10,000 lbs. options
Front Wheel Cut	53 degree
Rear	Leaf spring, 13,000–20,000 lbs. options; Air suspension optional on MT55
Tires/Wheels	19.5" and 22.5"
Controls	Operator station; single electric horn; ZF steering column; four-spoke 18" charcoal steering wheel

MT50e



ELECTRIC

SPECIFICATIONS

GVWR	16,000-19,000 lbs
Body	Walk-in van. No reduction in cargo volume capacity over other MT models.
Wheelbase	178 in /4.52 m. No reduction in ground clearance due to electric drive over other MT models. No increase in cargo bed height over other MT models.
Brakes	4-wheel hydraulic disc with regenerative braking.
HVAC System	Heating and ventilation with windshield defrost. A/C optional.
Drive System	Zero-emission all-electric ProTerra drive technology
Battery Capacity	226 kW/h ProTerra industrial-grade liquid-cooled lithium-ion battery.
Axle	Dana eS9000r eAxle
Driving Range	150-170 mi/240-273 km at full GVWR. Temperature extremes and vehicle load will impact driving range. Your average range may vary.
Charging	Full charge in 3.5 hours with 60 kW charger or 1.8 hours with 150 kW DC fast charging. Compatible with SAE J1772 CCS DC fast charging.
Max. Speed	70MPH or 110 km/H at full 19,000 lbs GVWR.
Operating Temperature	-40°F to 120°F/-40°C to 49°C.
Warranty	Drive and Battery: 8 years or 150,000 mi/240,000 km, whichever comes first. Backed by over 700 Freightliner dealers in the USA and Canada.
Safety	Complies with or exceeds all US and Canadian requirements. Features FCCC's exclusive RoadWatch suite of active safety technologies.
Certifications	Meets all applicable US federal and Canadian national standards, plus all applicable standards for all 50 US states and all Canadian provinces.

A eAxle

Dana S9000r eAxle

- Connects directly to motor
- No power loss



B Proterra Battery

Exclusive Proterra Battery System

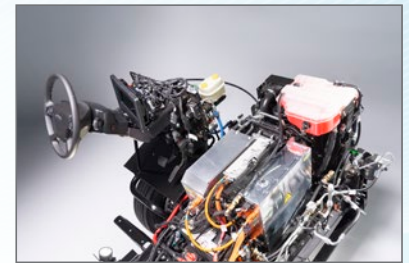
- 226 kWh = 303 HP
- Up to 170 mile range
- Full charge in 3 hours
- 70 mph @ 19,000 lb. GVWR



C Front Box

Innovative Front Box

- Makes every component easy to find and access
- Entire box can be pulled out quickly and easily for more involved service



Visit electricwalkinvan.com to learn more.

MT

C H A S S I S



FCCCommercial.com
electricwalkinvan.com

DAIMLER TRUCK
North America

Freightliner Custom Chassis - A Daimler Group Brand

Specifications are subject to change without notice. Freightliner Custom Chassis Corporation is registered to ISO 9001:2008 and ISO 14001:2004. Copyright © Daimler Truck North America LLC. All rights reserved. Freightliner Custom Chassis Corporation is a subsidiary of Daimler Truck North America LLC, a Daimler company.